

The FLasher

Oct/Nov 2015

*A Publication of the Everglades
Chapter of BMW CCA*

*Named for when fellow BMW drivers would
"flash" their headlights at each other*

**BMW Car Club
of America
Everglades Chapter**



*Tail
of the
Dragon*



Photos by www.killboy.com

CHAPTER OFFICERS

President:

Bobbi Treen
561.818.4269
robertatreen@gmail.com



Vice President -

Operations:

Mike Willette
561.248.9168
michael.willette@comcast.net

Vice-President – Driving Events/Webmaster:

Jon van Woerden
954.830.9538
jonvanwoerden@gmail.com



Vice President –

Social Events:

Raul Reyes
561.635.1983
raulalejandroreyes@hotmail.com

Secretary:

Wendy van Woerden
954.562.6585
wwwoerden@comcast.net

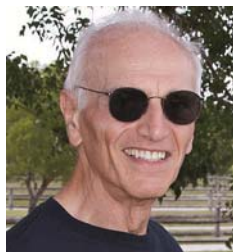


Treasurer:

Margaret Mitchell
561.689.0359
tinitimer@gmail.com

Parliamentarian & Membership:

Al Fortuna
772.344.4702
alfortuna@aol.com



The FLasher Club Magazine Editor

Michael J Posner
561.632.0462
mjposner1@gmail.com

**Please be considerate
of our Volunteers
No calls after 9 p.m.**

Do you want to receive the
The FLasher by snail mail instead?
PLEASE go to www.bmwcca.org and access
your account to update your preference.
Be sure your mailing address is
kept current. Email saves the Club over
\$1,000 per issue!!!

The FLasher

*A publication of the
Everglades Chapter BMW CCA, Inc.*

The Everglades Chapter BMW CCA, Inc. (herein referred to as the "Club") is in no way connected with BMW of North America, Inc. The Club publishes its Club Magazine, "The FLasher" at least quarterly. This publication and all its contents shall remain the property of the Club, and all information herein is provided by and for the members of the Club. Officially recognized chapters of the BMW CCA and BMW ACA are granted permission to reprint or excerpt any material in The FLasher, provided The FLasher and article's author are given proper credit. The FLasher does not represent any commercial interest, nor does it endorse or approve any product, service or advice. The Club assumes no liability for any of the information contained herein. Unless otherwise noted, none of the information bears the status of "Factory Approved." The ideas, opinions, and suggestions expressed concerning technical matters are those of the authors and no authentication is implied. Modifications undertaken during the warranty period may void the warranty. Written contributions to The FLasher are welcomed and encouraged (and sometimes pleaded and begged for by this Editor). The deadline for articles/photos is the first day of the odd months. The Editor reserves the right to edit for length and content. The Club's mailing address is PO Box 20318, West Palm Beach, FL 33416-0318.

*Copyright ©2015
Everglades Chapter BMW CCA, Inc.*

...The Inside LINE

Chapter Officers	2
Inside Track	3
Pole Position	4
Editor's Corner	5
On Track	6
Tech Session	7
Classifieds	8
Events Calendar	9
New Members	10
National Contact	11
Know your Members	11
View From The Driver's Seat	12
Cars & Coffee Events	13
Useful Web Links/Ads	14
Crossword Puzzle	16

INSIDE TRACK...

From your Editor...

For complete photo line up from our events - Please use the following links: www.bmwccaeverglades.org

PHOTO GALLERY

Photo gallery of Jon van Woerden's: "M6 on Route 66" images. www.jonvanwoerden.com/M6_RT66

for the Bimmers, Coffee, & Donuts:

tinyurl.com/bcd0215

Fisheye for the Car Guy carfisheye.blogspot.com

A big thanks to all of you that attended all of the great events!

SUBMISSIONS

The deadline for submission of materials, ads, for sale and events is the fifteenth day of the month of publication. Please E-mail to: mjposner1@gmail.com with "FLasher" as the subject line.

Braman BMW. You've Arrived.

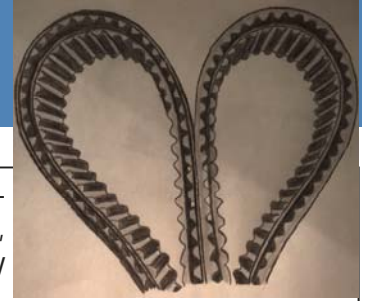
BMW 6 Series

BRAMAN MOTORCARS
866-641-8592 BramanBMW.com
WEST PALM BEACH
JUPITER

Visit us today for exceptional offers.

The Ultimate Driving Machine®

Pole Position by President Bobbi Treen



As of Sept 30, Everglades has 1,202 primary membership; with 201 associates, bringing our total membership to 1,403. Currently we have a membership drive (ends Dec 31, 2015)! Visit the national website www.bmwcca.org for rules and for the great prizes. By the way: a BMW CCA Membership makes a great gift!



Bob Alt & Gen at NJ Motorsports Park

O'Fest – Yes it has come and gone. The road trip Wendy and I took was pretty cool. The “next time” it has to be a roomier car! It was definitely not an Ultimate Driving Machine! We had to be at the Philadelphia International Airport to pick up Jon – who was flying in from Germany, on Saturday evening. We actually did get to the airport with time to spare or so we thought. We parked in the cell phone lot waiting for Jon – I got out of the car to check the arrival time on the boards and his flight was on time and due to land in about 20 minutes. I get back to the car and Wendy is on the phone with Jon – who has already landed! No there wasn't a time warp – he was early. Great timing! Now it is time for dinner and some sleep.

The week was packed with so much to do. Unfortunately, a couple of the days had too many events scheduled. It is all for fun and fun it was. The week was filled with all things BMW; reacquainting with members; meeting new members; enjoying the scenery of NJ (*eww NJ—editor*). Kathy Kehoe-Lee and I did the Fun Rally. We did not plan on it until the last minute (the eleventh hour really means something here!), which included getting a rental car (yes, Tony had their car at the track). We were on a tight schedule to get back to the host hotel as we both had volunteered to be somewhere. We did have fun – finished it and answered all the questions or rather “found” an answer to the questions but not enough were correct! Main thing was we enjoyed it and had FUN – and it was (again) a very non-stress day!

For me, Prohibition Night was the most fun! All dressed up and places to be! It was great to see the costumes and outfits – the participation and the excitement was very high! The organizers went all out for that night - a very classy event! The greeters, the jazz band, the Tarot Card and Palm reader (yes I did!); professional photo shoot; and a back room casino! I am sure everyone had a blast. I know I did! This O'Fest was my first year of no trophy. But the odds were not in my favor since I only participated in one event. Bob Morin of Everglades and Connecticut Valley Chapters won the Best Overall Performance Trophy. Congratulations Bob – Great Job indeed. O'Fest 2016 will be in Monterey, CA in August.

Nominations will open Oct 20 for the officers for 2016. Members will have until the November Social Meeting (November 17) to nominate members for elected positions. The Chapter Election Chairperson will contact each of the nominees for their acceptance of position. Please contact our Election Chairperson: Jim Storch (Office number 561.744.9500 (ask for Jim Storch) or e-mail: jstorch@florida-pneumatic.com to nominate a member for a position. All seven positions will be open for nominations: President, VP Operations; VP of Driving Events; VP of Social Events; Treasurer; Secretary; and Parliamentarian. If you are interested, please feel free to contact an officer for a description and duties of each position or go to the website for the posted Chapter By-Laws. The terms are for one year. There is no glorifying podium finish for being an officer, just the personal satisfaction that you volunteered your time for a fantastic car club.

AUTOGEEK - Wayne Carini, host of "Chasing Classic Cars" on the Velocity Channel, will be a special guest at Autogeek's Cars & Coffee on Saturday morning, November 14th. AutoGeek.net hosts a Cars & Coffee on the second Saturday of the month, located at 7744 SW Jack James Dr., Stuart. The BMW's have been given their own area. Come out and enjoy. www.autogeek.net/cars-and-coffee-florida.html. Their Annual Detail Fest & Car Show is March 19-20, 2016 – check their website for information and registration: www.autogeek.net/detail-fest.html. Autogeek is in the planning stages for a “Car Club” day at Detail Fest. We are working on Everglades Chapter involvement with Detail Fest. Last year we had a great turn out of BMW's, with lots of trophies awarded.



Dirk & Alexandra de Groen posing

Editor's Corner by Michael J Posner

Welcome to the second issue of the new Flasher. We continue to work hard to make the club magazine a valuable tool to all members. Feedback, suggestions and content would be greatly appreciated. This month's cover features pictures of Al Fortuna's M3 navigating the Tail of the Dragon, an 11 mile stretch of country road with over 300 curves, located on the Tennessee and North Carolina border (starting in Blount County, Tennessee. In Al's own words, "...you can see an E92 M3 applying some pressure in the corner. Somehow, I managed to stay to the right of the double yellow line."



I had an opportunity to run the tail back in 2013 with my co-pilot, Rocky the wonder Pom. It was a great run, though there are many other less crowded roads in the area that provide as much driving fun. At the starting point there are two competing gift shops, dragon statuary and the Tree of Shame, covered in car and motorcycle parts.

Because the tail is so popular, traffic can be an issue. Photographers from competing companies line the road taking pictures for sale (our cover photos are good examples). At the end there is not even a good-bye sign, the road just continues on as if nothing special just happened. If you are a mini owner, there is an annual event that has hosted several hundred Minis on the Tail. The 14th annual

event is May 11th- May 15th 2016, with info at minisonthedragon.com/2016-intro.php.



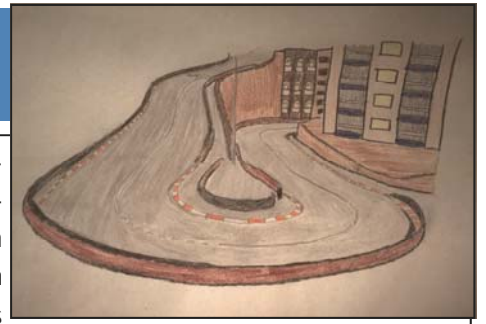
Cars & Coffee

Join us every 2nd Saturday of the month

7744 SW Jack James Dr, Stuart

For more info call 772-287-2701 or visit www.autogeek.com

On Track by Conrad Damon



There is much to be learned, about cars and driving and yourself, by taking advantage of the numerous opportunities to attend a driving school. We are particularly fortunate in South Florida to have three tracks relatively close to us: Palm Beach International Raceway; Sebring; and Homestead. There are numerous clubs through which you can get some instruction in your own car at very reasonable rates, such as NASA, PBOC, PCA, Chin, Hooked on Driving or Performance Drivers Group, to name a few. BMW Car Club of America conducts schools, but unfortunately they do not happen locally very often.

Once you sign up for one of the driving schools and arrive for your first day, you will understandably be excited and nervous. You will be assigned an instructor to work with you on track, but first you will need to get some very important classroom instruction. In class you will learn about your car's grip and the contact patches of your tires. You will learn about how the weight of your car is constantly moving around among the four contact patches of your tires under acceleration, braking and turning. You will learn that your tires have certain maximum grip level capacities which have to be shared by the demands on the tires for accelerating, braking and turning. You cannot ask a tire which is at 100% of its grip level meeting braking demands to also turn the car. Similarly, you cannot ask a tire which is using up 100% of its grip to turn, to simultaneously accelerate. Both situations will lead to skidding. Ask less of the tire for turning, by unwinding and straightening the steering wheel a little coming out of a turn, and you can simultaneously squeeze on a little more throttle to absorb the extra grip capacity you have created for the tire.

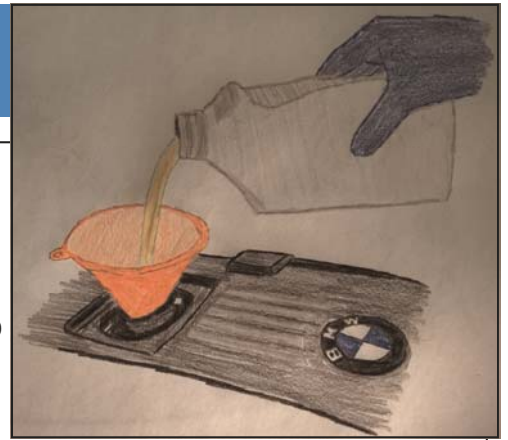
In the classroom (and again with your instructor when you go out on track), you will learn the general layout of the track and its turns and where you get on the track and where you exit the track. You will be shown the preferred "line" around the track. In general, when driving through a corner, you start at the farthest point on the outside of a turn (for a left hand turn, as far to the right on the track as possible), and then you go to the inside of the turn (for a left hand turn, to the left side of the track), and then drive back out the farthest point on the outside of the end of the turn. The inside point is usually referred to as the "apex" of the turn, and this is where you would stop turning the steering wheel to the left, in our left hand turn example, and beginning "unwinding" the steering wheel, and "tracking out" to the right to the outside point of the track at the exit of the turn. Part of the trick is learning where on the track you start your braking for a turn, where you begin turning in, where you apex, and where you track out. At first there is much to process, but after a little while and some repetition, it begins to make some sense and if you are attentive, the car will talk to you a little and you will begin to feel what is right. Feeling smooth usually means you are in the right zone. Feeling jerky usually means some adjustments are in order.



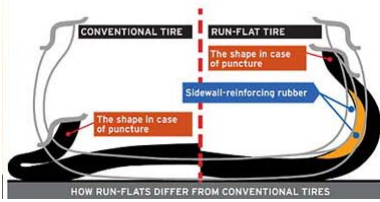
You will also learn about the location of flagging stations around the track. This is where various track marshals with radios and headsets sit with various flags with which they can signal approaching cars to alert the drivers to certain track conditions. For example, if a marshal is waving a yellow flag at a station, it means caution and slow down because of some potentially dangerous situation up ahead, such as a car which has spun around. A blue flag with a yellow diagonal stripe on it means to watch out behind you because a faster car is approaching you. Learning and knowing the flags and their meanings is very important for everyone's safety. There are only several to really learn, and it is not difficult.

You will also learn about the safety protocols for passing and being passed. This is a keystone of what makes the driving schools routinely safe. On the track

(Continued on page 8)



What are the pros and cons of run flat tires?

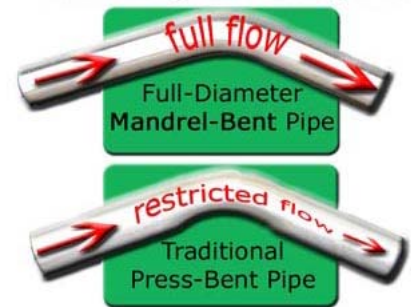


At the risk of stating the obvious, the main "pro" of a run flat tire is that you can continue to drive on it, typically up to 100 miles, giving you a chance to get off the highway and find a repair shop. Another potential benefit could be

that in the event of a blowout, the stiffer sidewalls will help support the car, theoretically providing more stable handling until you can come to a safe stop. Some of the "cons" of a run flat tire include: higher cost, stiffer ride, lesser availability, and difficulty in visually identifying a low-pressure condition. It is fair to say that there may be situations where a run flat tire is a better choice, but it is good to understand the trade-offs before making the decision.

Will adding a performance exhaust really increase my horsepower or will it just make my BMW louder?

There are exhaust systems out there that truly will improve performance; but there are also plenty available that will do nothing but "improve" your decibel level. So how do you know? A true performance enhancing exhaust will typically have equal or larger diameter tubing (as compared to your stock exhaust) for the full length of the exhaust system (not just the tips). It should also consist of only mandrel-type bends (smooth bends, maintaining the diameter of the pipe throughout the bend) and a less restrictive muffler.



The reduced restriction allows the engine to work less to move the exhaust through the system, which can translate into more power and an enhanced sound. It is worth noting that most stock exhaust systems are very heavy, so replacing them with a lighter weight performance system will lighten the total weight of your car, which alone can provide some enhanced performance.

For both fit and function, it is best to go with a well-known, proven, manufacturer of the system (e.g., Supersprint, Borla).

I have a 2005 328i. Can I use 87 octane gasoline in my car? Will it cause damage? Do I have any worries about ethanol gasoline in my BMW?



The widely-accepted answer to this is "no." Modern-day cars have been built to withstand the presence of ethanol in the fuel supply. However, if you are the owner of a vintage BMW, you may find yourself having to replace some of the hoses, gaskets and seals more frequently than if ethanol was not part of the mix. If you are going to allow your vintage BMW to sit for an extended period of time, my recommendation is to add a fuel stabilizer, or park it with its tank full of non-ethanol fuel (REC-90).

**Got Questions? Send them to Road N Race
at peter.roadnrace@gmail.com**

Classifieds

1985 BMW M635CSi euro.

Cinnabar red exterior. Black leather interior, Stainless exhaust system, BBS Wheels, it comes with the factory tow bar (never installed), car cover, dash & steering wheel cover. Current mileage 99,531. The engine was overhauled at 86,000 miles. Very well maintained and garage kept. Asking \$39,000. More pictures upon request.

Contact Jim at lianos635@gmail.com



1988 BMW E24 M6 For Sale \$12,500 - Fort Lauderdale, Florida

1988 BMW M6 BMW NA (Canada Version ... 1 of 135 Produced for Canada 1 of 73 1988) Royal Blue, Nature Interior. 180,000 miles S38 motor with Euro Headers Dash is very good, only two small cracks on leading edge of instrument cluster visible only from outside thru windshield. Back seats in very good condition, Front seats need re-upholstery along with mechanical work on drivers seat. Needs paint (Clear coat peeled on top surfaces) Has a few isolated rust spots, small dent on drivers side fender, metalwork under rear bumper needs to be straightened. Engine runs strong but needs tune up. Catalist was replaced with straight pipes. Self leveling rear suspension has been replaced. Factory 16-inch Style Five BBS alloys from a late-model BMW 740i. Contact Jon at jonvanwoerden@gmail.com



Misc. BMW Items

BMW Apple iPhone 4/4S Media Snap In Adapter (oem #84212218390) \$75.00 in box w/manual
BMW/MINI iPhone/iPod Y-Cable Adapter (oem #61120440812) \$25.00 (w/manual)
E9x Kidney Grille Set (oem#51137157275/6) \$50 for pair
Momo ALURAC Race Shift Knob \$50.00
TWM Performance A6 Leopard Shift Knob Engraved with shift pattern \$125.00

Contact Michael at mjposner1@gmail.com

(Continued from page 6)

you are permitted to pass in designated passing zones (usually on a few of the longer straights). You will learn about giving and receiving a "point by." That is, no passing takes place until the driver of the car being passed gives a point by (by sticking his hand out the window with the index finger, and only the index finger) pointing to the overtaking driver that he or she may go ahead and pass. In this way, both the passer and passee know that a pass is taking place which adds tremendously to safety. There is some courtesy and etiquette to also be learned in connection with passing, which your instructors will try to help you to understand and appreciate (e.g. if the car behind you has been very close to you for 2 or 3 turns in a row, it is faster than you, so let it by in the next approved passing zone).

Next time in On Track: On Track

2008 Monaco Beaver Contessa Motorcoach

43' length; Milan floor plan; Mileage: 21,730. Diesel power. Cat 425HP; CB radio; driver seat area comfort; Four slides; under basement storage (one with pull thru); In-motion satellite TV/CD stereo system in Living room and

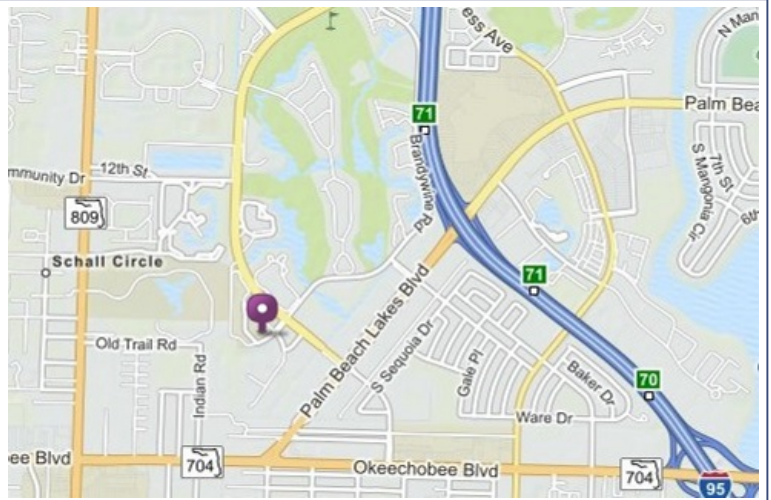


Bedroom; Exterior entertainment Center; two sofa set up; Full kitchen: Side by Side/refrigerator -freezer with in the door water and ice dispenser; GE Profile Micro/ Convection oven; Full bath & half; lots of storage space; King size - Sleep Number Bed; ceiling fan; Ceramic Tile Flooring living room; Combo Washer/Dryer. 3 A/C (roof) units; Central Vac system; Sani-Con system; Many other comfortable amenities. ONLY serious reasonable offers. **Asking \$220,000.** Located in West Palm Beach. ANY Questions: Contact Chuck Lonsdale at 561.635.2554 (call or text) OR 561.686.6123 or **contact Bobbi (Roberta) Treen 561.818.4269 via email robertatreen@gmail.com**

Everglades Chapter monthly Social Membership meetings are held on the third Tuesday of each month at 7:30 p.m.

NEW LOCATION:
Duffy's Sports Grill
Village Commons
721 Village Boulevard,
West Palm Beach.

We will have the private room from 7:00 PM until 10:00 PM



Events Calendar *New Members*

November 7-8: 2 day M School- BMW Perf. Ctr. Spartanburg. Info-bmwcca.org

November 8: Cars and Coffee Palm Beach; PB Outlet Mall; 9-Noon

November 14: Cars and Coffee Autogeek; Stuart; 9:00 a.m.—??

November 15: German Classic Car Show hosted by South Florida VW Club, Weston Town Center 9:00-2:00

November 17: Club Social at Duffy's Sports Grill (location and time above)

November 21: BMW Z Car event @ Riverside Park, 9:00 a.m. behind the tennis courts south of the boat ramp. Info: healeymk111@yahoo.com

November 22: Cars and Coffee at Dale Photo & Digital (see page 13)

December 6: Cars and Coffee Palm Beach; PB Outlet Mall; 9-Noon

December 13: Tire Rack Street Survival @ Homestead Motor Speedway

December 15: Club Social at Duffy's Sports Grill (location and time above)

December 20: Cars and Coffee at Dale Photo & Digital (see page 13)

Zachary Desruisseau Palm City

Guillermo Siman Miami

Lucrecia Siman Miami

Juan Siman Miami

Guillermo Siman Miami

Rick Staveley Wellington

Frances Staveley Wellington

Philip Pendas Miami

Mario Cartaya Fort Lauderdale

Javier Morales Miami

France Jackson Aventura M4

M4 2dr Coupe 2015

Franco Devecchi Miami

Raymond Vehovec West Palm Beach

David Little Key West

Mark Sullivan Miami

Mike Verdeja Coral Gables

Jeffrey Nelson Sea Ranch Lakes

Susan Ricca Boca Raton

Tara Remagen Weston M6

2dr Convertible 2007

Louis Schipani Aventura

535i 4dr Sedan 2015

William Swaim Delray Beach

Steve Markel Jupiter

Michael Weber Fort Pierce

Christopher Coords Coral Gables

Hector Lorenzo Miramar

Carlos Suhr Palmetto Bay

Michael Farinacci Boca Raton

Tony Farinacci Boca Raton

Christopher Ramsey Palm

Beach Gardens

Wael Garine Palm Beach Gardens

Shana Bridgeman Coral Springs

Martin Valles Miami 2009 328i

Alberto Bernal Key Biscayne

Maikel Gomez Hialeah

Jeronimo Guzman Palm Beach Gardens

Douglas Shuster Coconut

Creek 7 Series 2012 740Li

Jorge Diaz Hialeah

Scott Ellis Lake Worth

Peter Rojas Miami

Pablo Villafane Hialeah Gardens

Peter Staniak Key West

Alex Rivas Palm City

Daniel Rodriguez West Palm

Beach

Bennett LoBalbo Delray

Beach



Like us on facebook: facebook.com/groups/evergladesbmwcca

*Everglades
Chapter
Members
save
10%
on your
Next
Service
at
Cupelli
Automotive*



family owned & operated

We Perform Factory Scheduled Services, Factory Level Diagnostics, Dealership Alternative.
We Honor Extended Warranties.

- PREVENTATIVE MAINTENANCE
- OIL SERVICE
- BRAKE SERVICE
- TRANSMISSION SERVICE
- COMPUTER DIAGNOSTICS
- AIR CONDITIONING
- FUEL SYSTEM
- COOLING SYSTEM
- ELECTRICAL WORK

**Specializing
in European Cars**
**Complete BMW Factory
Level Diagnostic Equipment**

561.963.9744

www.cupelliautomotive.com

4511 1/2 Lake Worth Rd
Lake Worth, FL 33463

BMW CCA Member



Servicing Palm Beach County for Over 20 Years

Know your Club Members

BMW CCA is now 46 years old, and the largest Car Club in the World. Two of our own have been members of the Club over forty years, Ernie Bello #3078 and Drew Gregg #1315. I reached out to both and asked them the following questions:

Why did you join BMW CCA? Drew: In 1972 when I bought my 2002, I had the only BMW in Hickory NC, and the dealer was 80 miles away in Charlotte. Ernie: I joined because I had many customers with Porsches and BMWs at the time, but the 2002 owners seemed to be even more fanatical than the Porsche drivers! They never stopped talking about them... So I joined. Back then the Roundel was little more than 8-10 mimeographed (dating myself again!) sheets, spreading the BMW Gospel around the country. The West Coast guys had their own BMW CCA, and the rivalry with BMW CCA was interesting...

What was your first BMW? Drew: My 1972 2002 which I still own. Ernie: Way back in 1974, I was a Senior @ FAU, and found a good deal on a 1968 BMW 2002- nice looking, solid car- that turned out to be the worst car I've ever had....! but I took it in stride, have had 10-12 BMWs since.

What is your favorite BMW? Drew: 1972 3.0 CS coupe that I could never afford. Ernie: Of the "Veteran" cars, probably I like the best '97 Estoril Blue M3 we had - now owned by Bob VanEpps; of the newer cars, I'm liking more and more the 2 and 3-Series cars.

What is your favorite part of being a BMW CCA member? Drew: The Roundel, and meeting other Bimmer

(Continued on page 13)

Commercial Advertising

Advertising in *The FLasher* provides you with the opportunity to reach over 1,300 subscribers with a common BMW/Mini interest. Please supply your ad by e-mail (in .jpeg or .PDF format) anytime up to the 15th day of the following months: October, December, February, April, June or August by e-mail: mjposner1@gmail.com

Please have it print ready — it is your Advertisement

<u>Per issue</u>	<u>Per Year (for 6 Issues)</u>	
Full Page	\$175.00	\$950.00
1/2 Page	\$100.00	\$550.00
1/4 Page	\$55.00	\$300.00
Business Card	\$25.00	\$125.00

Please make checks payable to Everglades Chapter BMW CCA, Inc. and send your payment to us c/o Advertising, P.O. Box 20318, West Palm Beach, Florida 33416-0318

FOR NEW or RENEWAL MEMBERSHIPS

Visit: www.bmwcca.org or call 1.800.878.9292

VISA & MasterCard Accepted ALL other CLUB business call 864.250.0022 **MOVING? ADDRESS CHANGES AND CORRECTIONS:** www.bmwcca.org
NATIONAL OFFICE maintains ONE database for the "mailings" used for the chapters, the Roundel, newsletters, raffle tickets, elections & anything that requires a mailing (via USPS, Fed Ex, UPS type services) for BMW CCA members. Your Email is also utilized for sending email blasts of the electronic Roundel, The FLasher, and your chapter Constant Contact Emails. YOUR correct Email is your electronic notification—

PLEASE keep it current with National.

Contact via: FAX 864-250-0038 or Email: questions@bmwcca.org with your name—membership number and the old and new information. BMW Car Club of America, Inc. 640 S. Main St., Suite 201, Greenville, SC 29601; Fax 864. 250.0038
Website www.bmwcca.org Membership \$48.00 a year with discounts for multiple year renewals. Lifetime Memberships are available. The fee for an Associate membership (Spouse, significant other, child) is \$10.00 a year. Associates have the same benefits of a members without a Roundel or Club Magazine.

2014 Everglades Chapter Financial Statement

Submitted by Roberta Treen, on March 27, 2015 at 9:17 p.m.

Balance Sheet

<u>Assets</u>	
Cash In Bank Accounts	31,715.02
Inventory	0.00
Equipment	0.00
Accounts Receivable	0.00
Prepaid Expenses/Deposits	429.12
Other	<u>0.00</u>
Total Assets	32,144.14

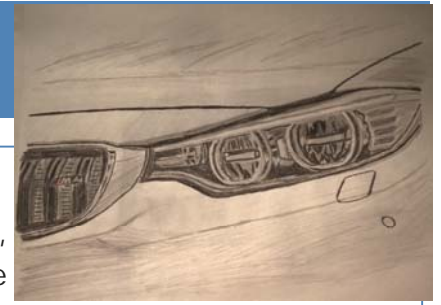
<u>Liabilities & Equity</u>	
Accounts Payable	0.00
Other	0.00
Equity/Retained Earnings	<u>32,144.14</u>
Total Liabilities & Equity	32,144.14

<u>Income Statement</u>	
Income	
Membership Dues	17,359.14
Rebates from National	185.00
Advertising Revenue	42.00
Driving School Fees	0.00
Autocross Fees	0.00
Other Event Fees	1,754.40
Merchandise Sales	200.00
Interest	0.00
Misc./Other	<u>4,506.01</u>
Total Income	24,046.55

<u>Expenses</u>	
Newsletter Costs	3,991.45
Postage	1,271.75
Insurance	430.79
Driving School Expenses	0.00
Autocross Expenses	0.00
Meeting Expenses	2,489.22
Other Event Expenses	7,817.59
Telephone Expenses	1,435.12
Misc./Other	4,546.08
Total Expenses	<u>21,982.00</u>
Net Income (Loss)	2,064.55

<u>Misc./Other Income</u>	
Charity	777.00
MotorsportsReg	0.01
Dinners Paid	476.00
Car Show	1,178.00
Sponsors -Car Show	<u>2,075.00</u>
Total:	4,506.01

<u>Misc./Other Expenses</u>	
Charity	1,700.00
State of FL Corp Fees	61.25
P.O. Box Rental	232.00
Bank Fees	274.96
Chapter Logo Polo Shirts	560.48
FL Suncoast Chp. Sebring Corral	750.00
AWARDS	390.50
Business Supplies	<u>576.89</u>
Total:	4,546.08



2016 BMW 7 Series – The High-Tech Future of Luxury is Here Today

There are cars that, by virtue of their position at the top of the financial, technological and luxury food chain, are destined to be rolling laboratories where both the thrills and comforts of tomorrow are born, refined and eventually trickle down to less-expensive models.

The 7-Series, BMW's corporate flagship, is such a vehicle and has been since it was first introduced in 1977.



Now in its sixth generation, the all-new 2016 7 Series features changes both great and small that, cumulatively, add up to the closest thing you will find to a private jet on wheels.

Minor changes include a slight refresh to its appearance, long-wheelbase versions only for the US, and a consolidation of engines to turbo-charged, 320 horsepower 6-cylinder and a turbo-charged 445 horsepower V-8. Both will be equipped with an 8-speed automatic and a

(Continued on page 13)



**NOVEMBER 15,
2015**

**GERMAN CLASSIC
CAR SHOW**

Show Hours: Set up
8:00 am, show opens
9 am to 3 pm

Weston Town Center
1675 Market Street
Weston, Florida
1st 75 Cars get T-
Shirt/Dash Plaque
South Florida
VW Club

German Classic Car Show Registration

Name: _____ Phone: _____

Email: _____ Car: _____

Pre-registration Fee \$25.00 After Oct 31, 2015 \$35.00

Circle One:

Pre-1959•1960-1969•1970-1979•1980-1989•1990-1999•post 2000

Mail to: SFVW Club 230 SW 16 St., Pompano Beach, FL by 10/31/15

T Shirt Size Circle One: S M L XL XXL or (XXXI add \$5)

www.southfloridavwclub.com

(Continued from page 12)

choice of rear or all-wheel drive. Hybrid and diesel versions will also be available later in the year.

The new chassis is a composite of high-strength steel, aluminum and carbon fiber that is stiffer and weighs 200 pounds less. You can really feel it on the road, both in the responsive handling and the fact that the V-8 version will blast from 0 to 60 in 4.3 seconds -- which is faster than the M5 and faster than a good many sports cars, for that matter.

Rest assured that the new 7 Series is still very much an 'ultimate driving machine.'

But it is the new levels of technology and luxury that provide both sizzle and substance to the new 7 Series, such as the new "Gesture Control" system that allows you to operate the phone, radio, ventilation, etc. with a wave of your hand. There is also private jet-style 'Rear Executive Lounge Seating', that includes ventilated massage seats, scent dispenser and a removable touch-screen tablet that lets the passengers control the A/C, audio, seat adjustments and sunroof – plus you can surf the internet with it as well.

The optional 'Panoramic Sky Lounge LED Roof' is a cool blend of tech and luxury, laser-etched and side-lit to sparkle like a starry sky and create six colors of mood-enhancing ambiance.

The list of features goes on and on, from wireless smartphone charging in the center console to a system called 'Traffic Jam Assistant' that pretty much takes over the driving chores for you in stop-and-go traffic. You will have to Google the 7 Series and read 42 pages of factory press release to find out everything, but you do not really have to be an astronaut to operate it all – though an extra session or two with one of the BMW Geniuses might be in order. Tech aside, it is a luxurious, nice-driving car.

Braman BMW in West Palm Beach and Jupiter are the top 7 Series dealerships in the US, and will have these remarkable new vehicles before anyone else. Visit www.BramanBMW.com for more information, or call BMW Client Adviser Joe Porco at 561-242-3117 to arrange a test drive.

Bimmers, Coffee & Donuts

Presented by Everglades Chapter and hosted by Dale Photo and Digital in Hollywood, we will have a monthly event of Bimmers, Coffee and Donuts! We are planning for the third Sunday of each month BUT that is subject to change. Check the website for up to date postings! Please join us from 10:00 am till Noon. ale Photo & Digital, 2960 Simms Street, Hollywood, FL

(Continued from page 10)

owners. Ernie: Camaraderie, belonging to a group of similar-minded people, where no one looks at you hard when you state you like to "play with cars" at this ripe old age....

If you could have a new BMW 2002 or a new BMW 328i, which would you choose and why? Drew: I would still choose the 2002 over the 328i due to the low number of 2002's still on the road today. Ernie: Tough choice! Where can you find a new 2002?... I think I'd rather go with the 328i - Progress; Safety; Clean Exhaust; better everything!

Any comments? Drew: Still prefer two round headlights and tail lights. And a BMW that can pull my flats boat. That's why I also own the X5. Ernie: Guess I'm a real Gear Head! Been to 4 or 5 October-fests, first time in 1975. Been to BMW's Driving School @ Der Nurburgring in Germany 6 times! The last three times with my Lovely Bride, Cristina, so she, too, could drive! Sometime in the mid-eighties, took the whole family to the School - the boys were both under 10, and we have photos of the boys in the back seat of the car Cristina and I were sharing.... a four-door BMW 325is! To this day the boys still talk of being belted in the back seat as we ran around the 'Ring! No helmets required for anyone! No rules there against having people in the back seat, I guess. Apparently not concerned with liability either...? It's been a long ride, we've enjoyed it! As Werner Briel, a BMW School Organizer used to say - "Don't Hesitate, Accelerate!"

20% Discount to Everglades
BMW CCA Members
with their FIRST VISIT at our
New Location ROAD•N•RACE



AUTOMOTIVE REPAIR, FABRICATION & RACE PREP

Peter Shadowen
ASE Certified Master Technician

1966 W 9th Street
Riviera Beach, FL 33409
561 845-6640
info@roadnrace.com
www.roadnrace.com

MUSTANG
DYNAMOMETER

Useful Web Links

BMW CCA National Office: www.bmwcca.org
Everglades Chapter: bmwccaeverglades.org/site
BMW/Mini Model Code: bmwarchive.org/e-code
BMW VIN Decoder: tinyurl.com/q99ewlf
BMW Parts Catalog: www.realoem.com
Bimmerforums: tinyurl.com/o3guvly
BimmerPost: www.bimmerpost.com
BMWBlog: www.bmwblog.com
Braman BMW: www.bramanmotorsbmw.com
Street Survival: streetsurvival.org

Printing Services provided by:




4152 W. Blue Heron Boulevard
Suite 109
Riviera Beach, Florida 33404
561.848.5700
FAX 561.848.5774
jayg@printwithbudget.com



MICHAEL J POSNER
BOARD CERTIFIED
REAL ESTATE ATTORNEY

4420 BEACON CIRCLE
WEST PALM BEACH, FL 33407
DIRECT (561) 594-1442
TEL (561) 842-3000 EXT. 113
CELL (561) 632-0462
FAX (561) 842-3626

WWW.WARDDAMON.COM MJPOSNER@WARDDAMON.COM




Online division of Dale Laboratories
Serving America's Photographers
Since 1973

2960 Simms Street
Hollywood, Florida 33020
800.327.1776
www.dalelabs.com

Brands you trust.






LEMFÖRDER

BILSTEIN

Genuine BMW

Best price guarantee • No sales tax



800.535.2002 | BavAuto.com

We Stand Out From The Crowd.

Foreign Affairs Motorsport is the
Ultimate Service Facility for your
Ultimate Driving Machine.

- Factory-Trained Master Technicians
- Experts in Scheduled Maintenance
- Tuning & Performance Specialists
- Total Motorsports Support
- Dinan Authorized Tuner



Foreign Affairs Motorsport has been servicing the South Florida community since 1978. Our passion for automotive service excellence has led us to become the oldest independently owned & family-operated foreign auto repair and racing facility in the Southeastern United States.

Our master technicians have over 100+ years of combined experience in repairing makes such as BMW, Porsche, Mercedes-Benz, and Audi. We have all the latest specialty tools necessary to help maintain your German automobile in perfect running condition.



1935 NW 40th Court, Pompano Beach, FL

954-746-0488
www.2fam.com

The FLasher
 Everglades Chapter
 BMW CCA, Inc.
 P.O. Box 20318
 West Palm Beach, FL 33416-0318

**BMW Car Club
 of America
 Everglades Chapter**



BMWs, of Course																							
	<table border="0"> <tr> <td style="text-align: center; vertical-align: top; width: 50%;"><u>Across</u></td> <td style="text-align: center; vertical-align: top; width: 50%;"><u>Down</u></td> </tr> <tr> <td>2. Local BMW dealer</td> <td>1. Flexible disc</td> </tr> <tr> <td>6. Wild winged BMW</td> <td>3. City where BMWs are made</td> </tr> <tr> <td>8. Name of Club Magazine</td> <td>4. Where Minis are made</td> </tr> <tr> <td>9. Chapter name</td> <td>5. Nickname for BMW</td> </tr> <tr> <td>10. Warhol made one</td> <td>7. Our national sponsor</td> </tr> <tr> <td>12. More power please</td> <td>11. BMW Emblem</td> </tr> <tr> <td>14. Small BMW cousin</td> <td>13. Car club initials</td> </tr> <tr> <td>16. Editor of Roundel</td> <td>15. First word in BMW</td> </tr> <tr> <td>18. Our president</td> <td>17. US tuner</td> </tr> <tr> <td>19. German tuner</td> <td></td> </tr> </table>	<u>Across</u>	<u>Down</u>	2. Local BMW dealer	1. Flexible disc	6. Wild winged BMW	3. City where BMWs are made	8. Name of Club Magazine	4. Where Minis are made	9. Chapter name	5. Nickname for BMW	10. Warhol made one	7. Our national sponsor	12. More power please	11. BMW Emblem	14. Small BMW cousin	13. Car club initials	16. Editor of Roundel	15. First word in BMW	18. Our president	17. US tuner	19. German tuner	
<u>Across</u>	<u>Down</u>																						
2. Local BMW dealer	1. Flexible disc																						
6. Wild winged BMW	3. City where BMWs are made																						
8. Name of Club Magazine	4. Where Minis are made																						
9. Chapter name	5. Nickname for BMW																						
10. Warhol made one	7. Our national sponsor																						
12. More power please	11. BMW Emblem																						
14. Small BMW cousin	13. Car club initials																						
16. Editor of Roundel	15. First word in BMW																						
18. Our president	17. US tuner																						
19. German tuner																							